



# MT4 FOREX DERIVATIVES USER GUIDE



STARFISHFX 1.3.18.0 Settings

**Manual** Automatic

Symbol AMERICAbo

Type Up / Down

Period 15m - 80.0%

Amount 200

Stop if balance over 11000

Stop if balance below 9500

**AUTO UP**

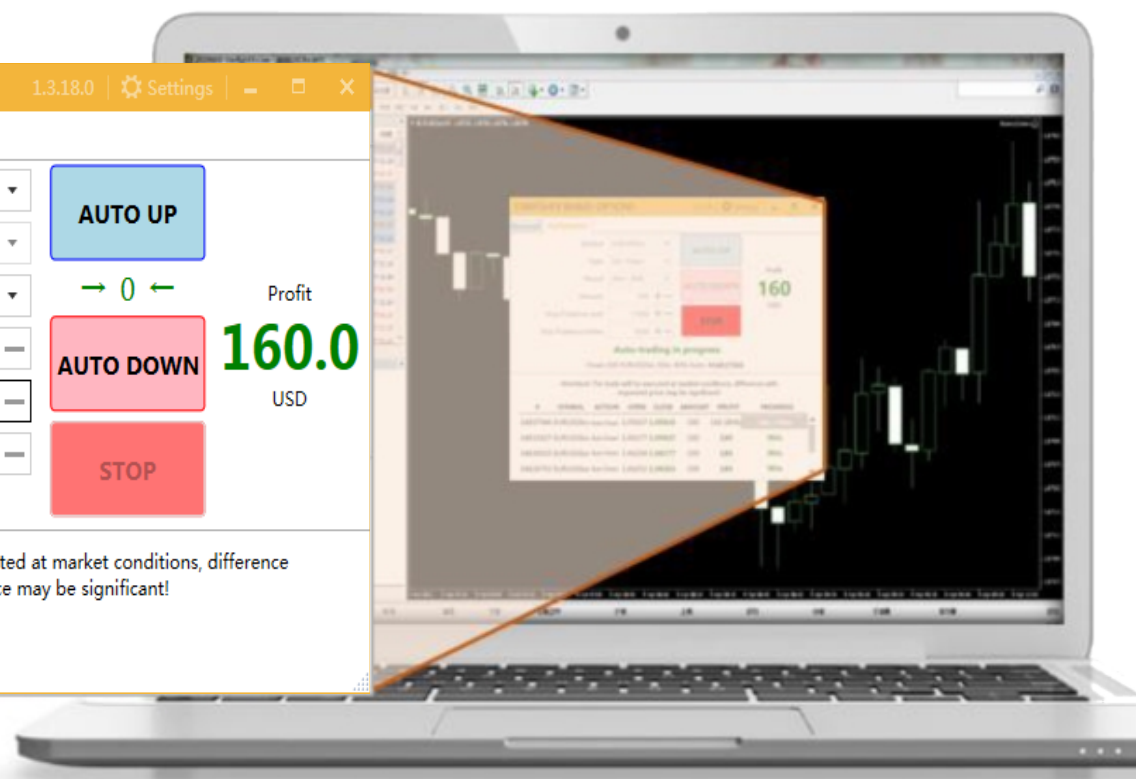
→ 0 ←

**AUTO DOWN**

**STOP**

Profit **160.0** USD

Attention! The trade will be executed at market conditions, difference with requested price may be significant!

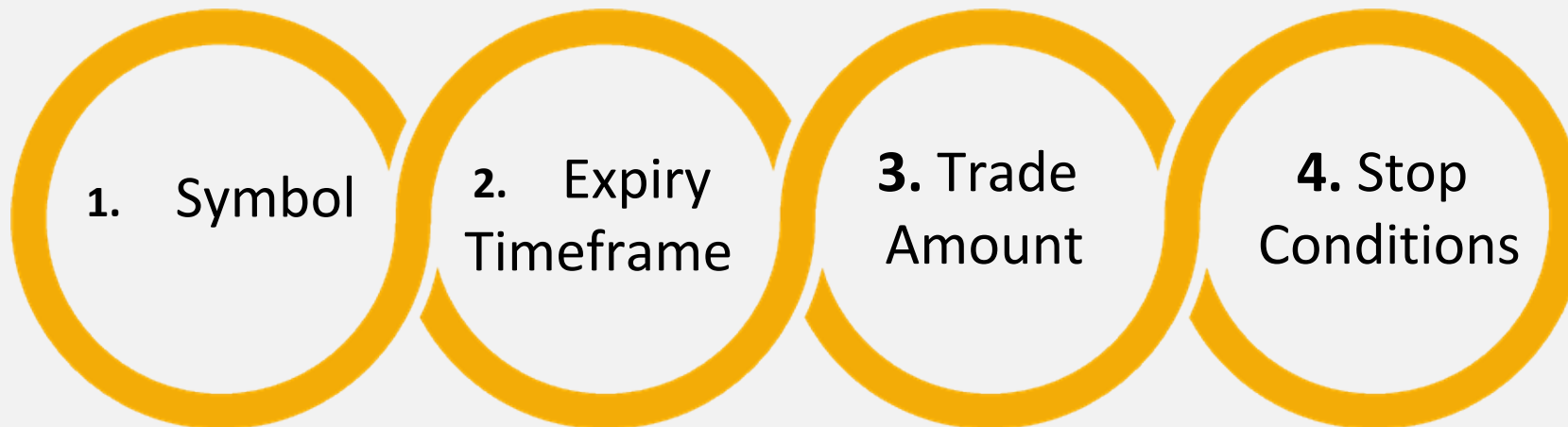


**Profiting  
Just Got  
Easier.**

---

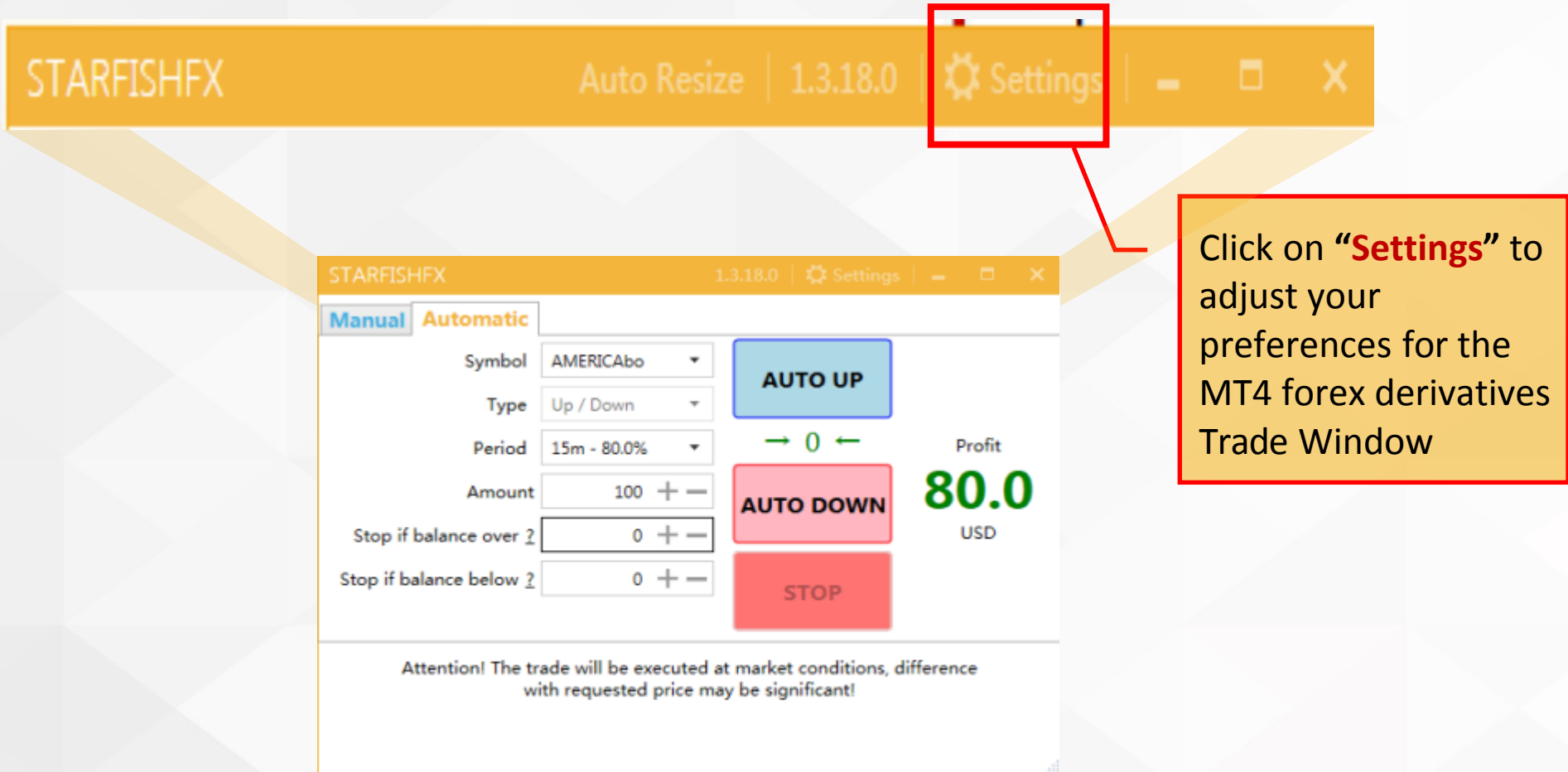
The Auto Roller is a feature that allows traders to **automatically repeat** an assigned trade setup in a selected direction – UP or DOWN.

The parameters to be added before starting the auto rollers are:



Choose a Direction and Auto Roller starts. Once the derivatives Expires, a new derivatives with the same parameters and direction will automatically open.

The automated trading will stop once it reaches the pre-set **Take Profit** or **Stop Loss** Levels, or when the trader manually stops it.



STARFISHFX | Auto Resize | 1.3.18.0 | **Settings** | - | □ | X

STARFISHFX | 1.3.18.0 | Settings | - | □ | X

**Manual** | **Automatic**

Symbol: AMERICAb0

Type: Up / Down

Period: 15m - 80.0%

Amount: 100 + -

Stop if balance over 2: 0 + -

Stop if balance below 2: 0 + -

**AUTO UP**

→ 0 ←

**AUTO DOWN**

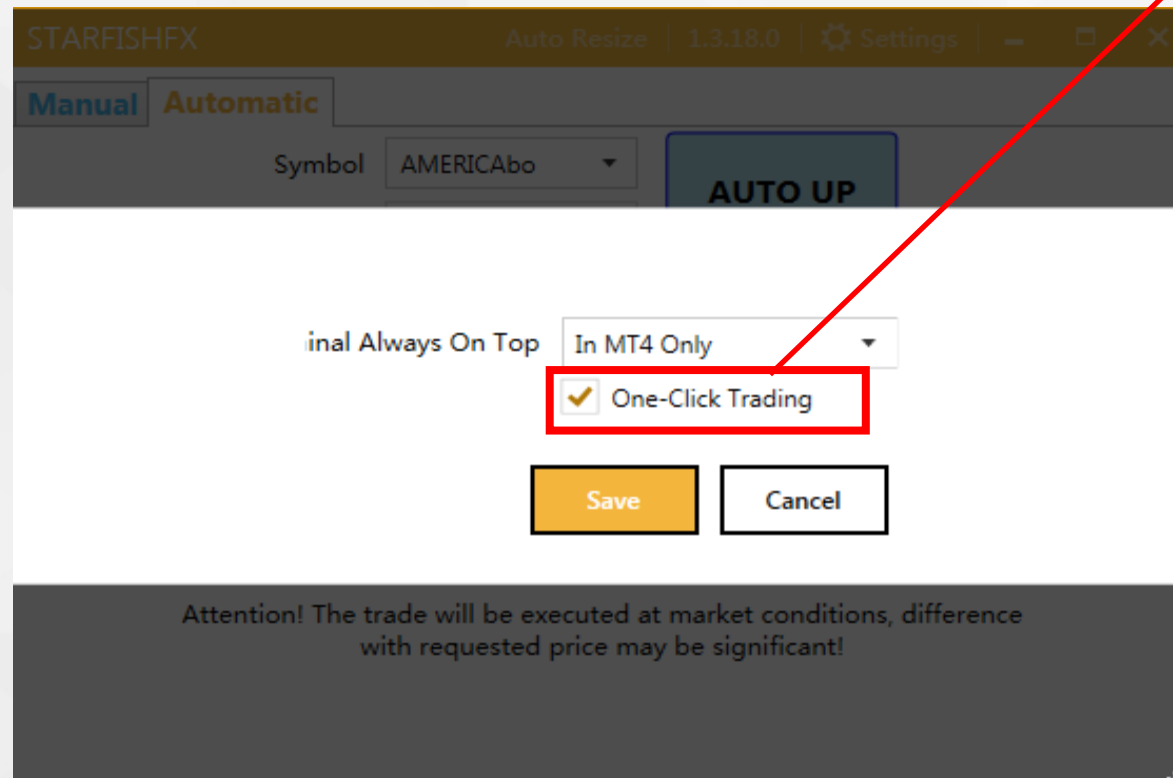
**STOP**

Profit: **80.0** USD

Attention! The trade will be executed at market conditions, difference with requested price may be significant!

Click on **“Settings”** to adjust your preferences for the MT4 forex derivatives Trade Window

## One Click Trading



STARFISHFX Auto Resize | 1.3.18.0 | Settings

Manual Automatic

Symbol AMERICAb0

AUTO UP

Initial Always On Top In MT4 Only

One-Click Trading

Save Cancel

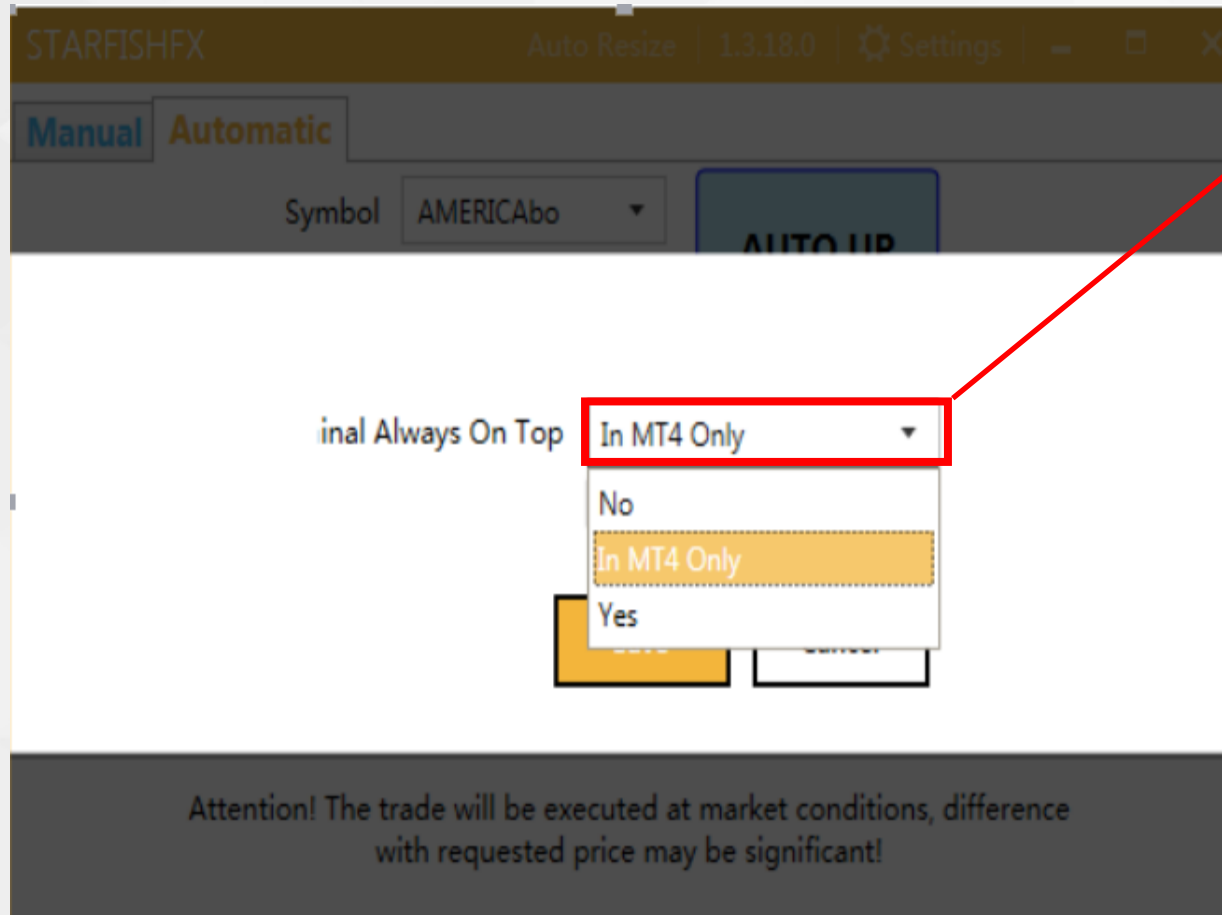
Attention! The trade will be executed at market conditions, difference with requested price may be significant!

“One-Click Trading ” is enabled by default. This means trades are entered instantly when you click “Up” or “Down”

### Caution :

By unchecking this derivatives you will be prompted to make a confirmation for every trade you enter. This may result in slower trade entry.

**This is purely for personal preference and will not affect your trades.**

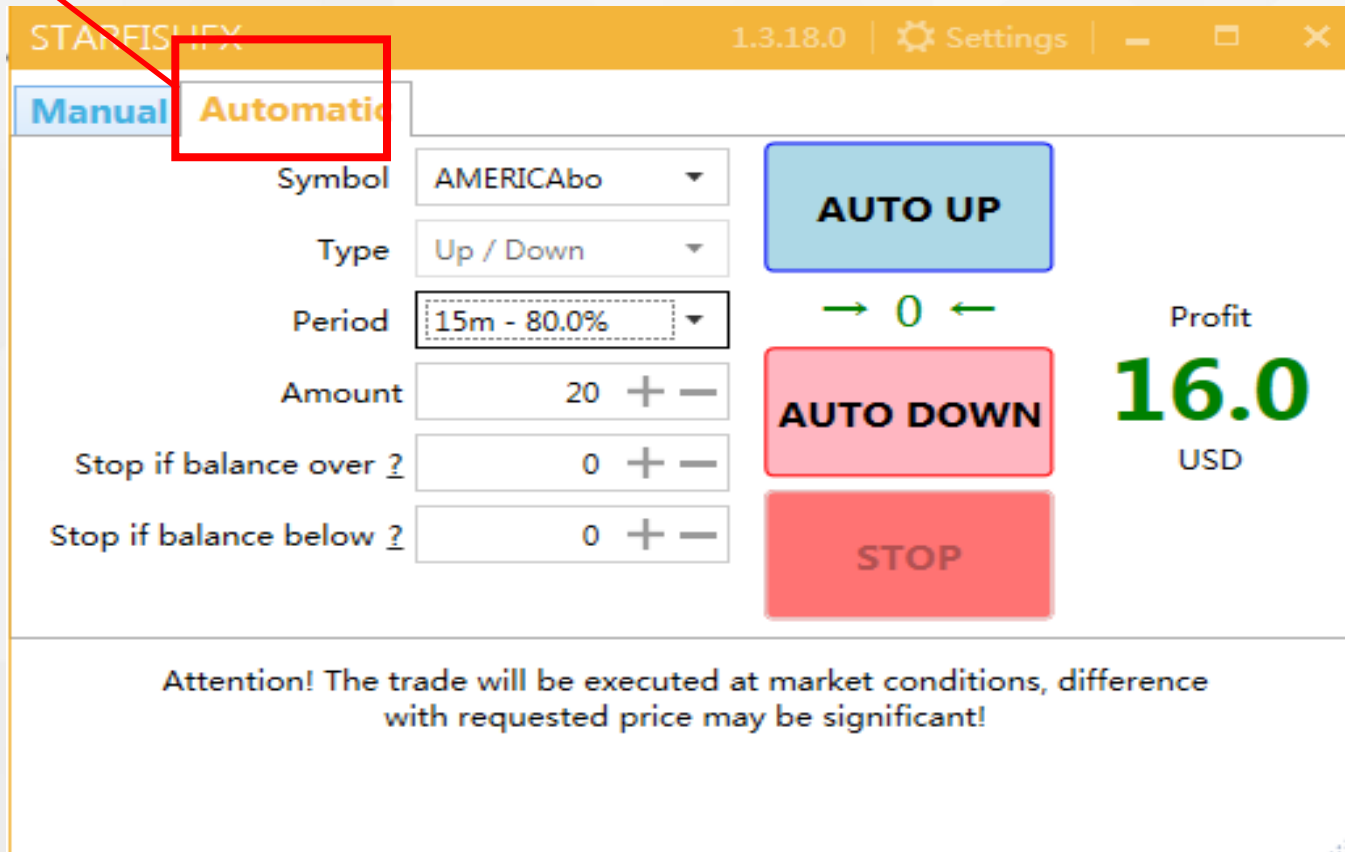


Choose **“No”** if you do not wish to have the trade window always on top.

Choose **“In MT4 only”** if you want the trade window always on top within the MT4 application only.

Choose **“Yes”** if you want the trading window to be always on top across all applications opened in your operating system.

Select the “Automatic” tab to switch to the Auto Roller.



STARFISHFX 1.3.18.0 | Settings

**Manual** **Automatic**

Symbol AMERICAb0

Type Up / Down

Period 15m - 80.0%

Amount 20 + -

Stop if balance over ? 0 + -

Stop if balance below ? 0 + -

**AUTO UP**

→ 0 ←

**AUTO DOWN**

**STOP**

Profit **16.0** USD

Attention! The trade will be executed at market conditions, difference with requested price may be significant!

**Note :**

You can switch back to Manual Trading at any time simply by clicking the “Manual” tab, even while Automatic trading is active.

Choosing of basic parameters are essentially the same as Manual forex derivatives trading.

STARFISHFX Auto Resize | 1.3.18.0 | Settings

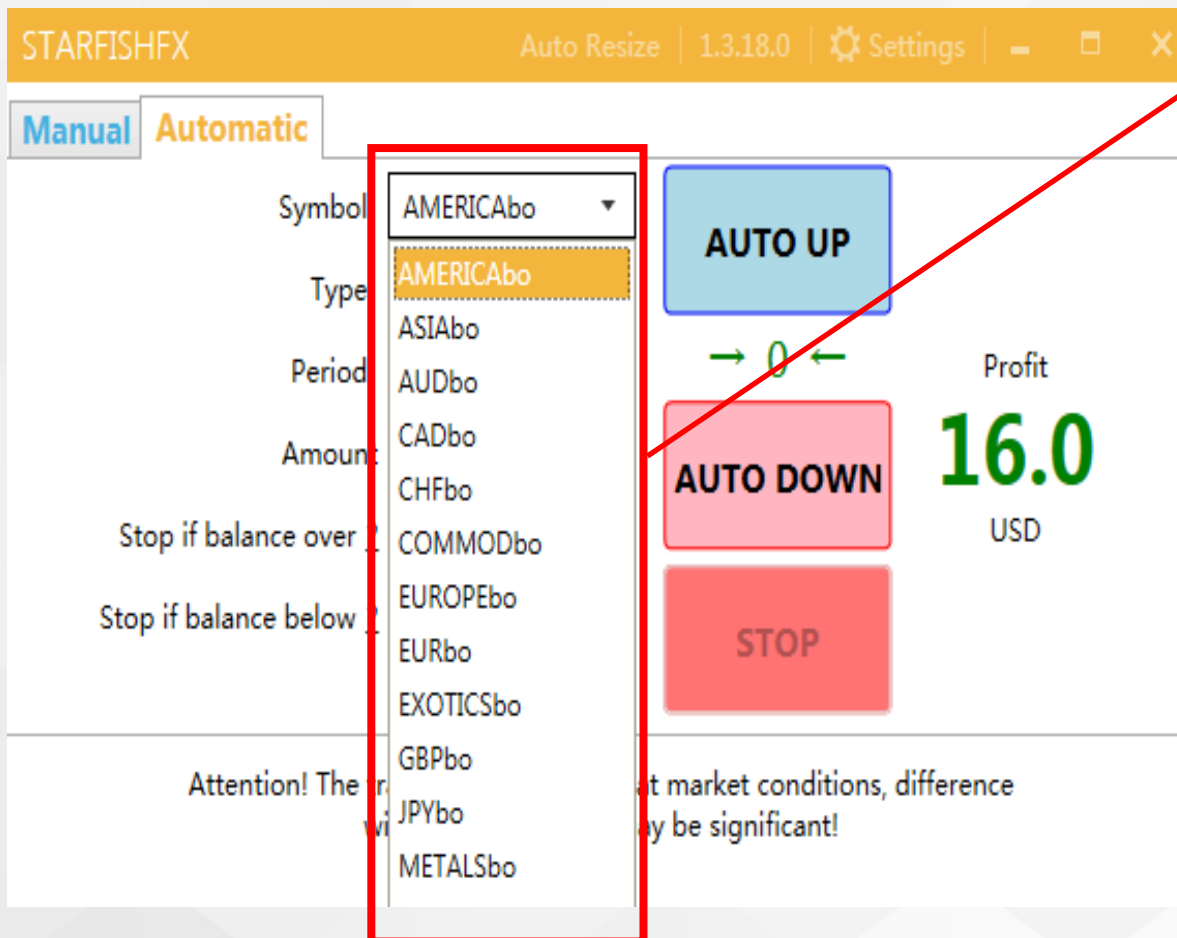
Manual Automatic

Symbol	AMERICAbo	<b>AUTO UP</b>
Type	Up / Down	
Period	15m - 80.0%	
Amount	250 + -	
Stop if balance over ?	0 + -	<b>AUTO DOWN</b>
Stop if balance below ?	0 + -	<b>STOP</b>

→ 0 ← Profit  
**200.0**  
USD

Attention! The trade will be executed at market conditions, difference with requested price may be significant!

## 1. Choose SYMBOL



STARFISHFX Auto Resize | 1.3.18.0 | Settings

Manual Automatic

Symbol: AMERICAbo

Type: AMERICAbo

Period: ASIAb

Amount: AUDbo

Stop if balance over: CADbo

Stop if balance below: CHFbo

COMMODbo

EUROPEbo

EURbo

EXOTICSbo

GBPbo

JPYbo

METALSbo

AUTO UP

→ 0 ←

AUTO DOWN

STOP

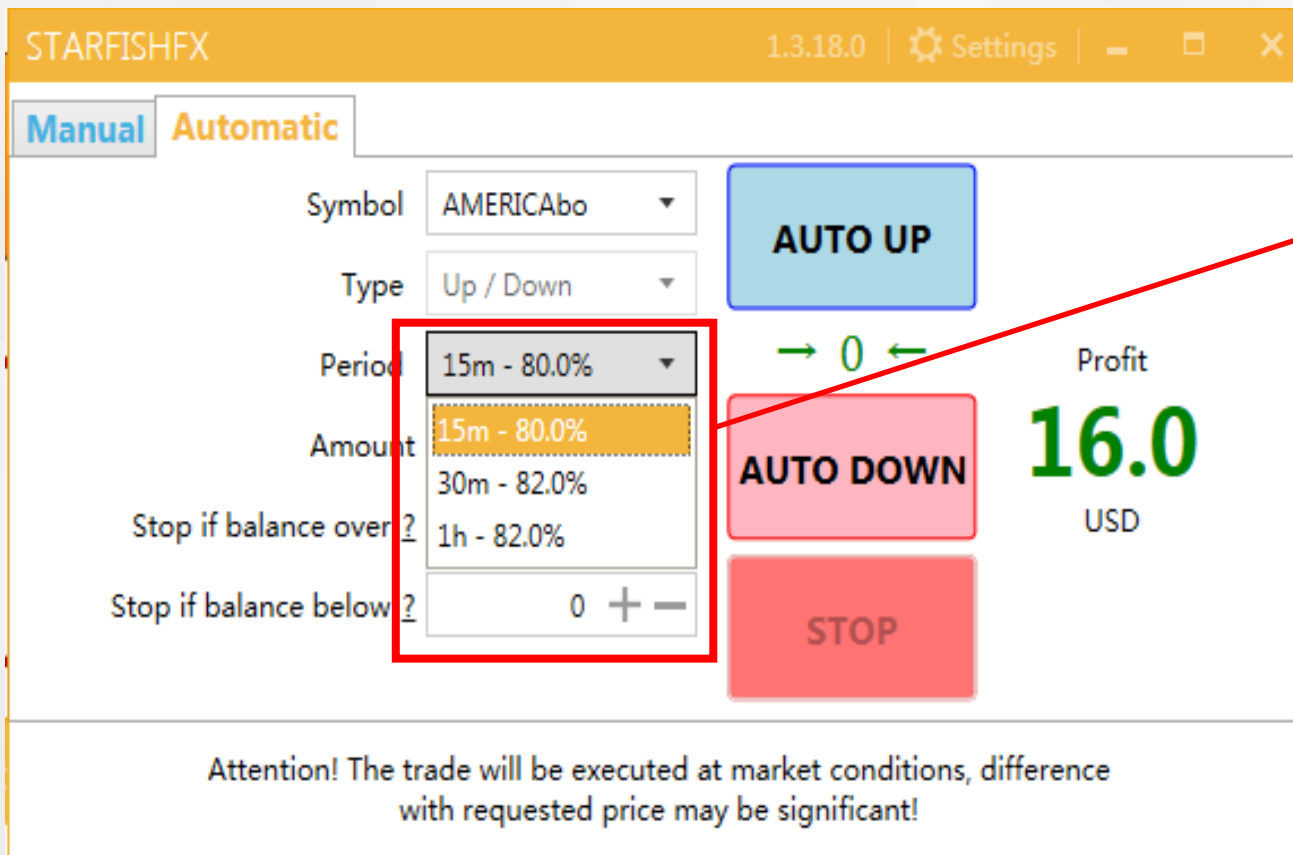
Profit: 16.0 USD

Attention! The market conditions, difference may be significant!

Select the **Asset** you wish to trade



## 2. Choose PERIOD



STARFISHFX 1.3.18.0 | Settings

Manual Automatic

Symbol AMERICAb0

Type Up / Down

Period 15m - 80.0%

Amount 15m - 80.0%

Stop if balance over ? 30m - 82.0%

Stop if balance below ? 1h - 82.0%

0 + -

AUTO UP

AUTO DOWN

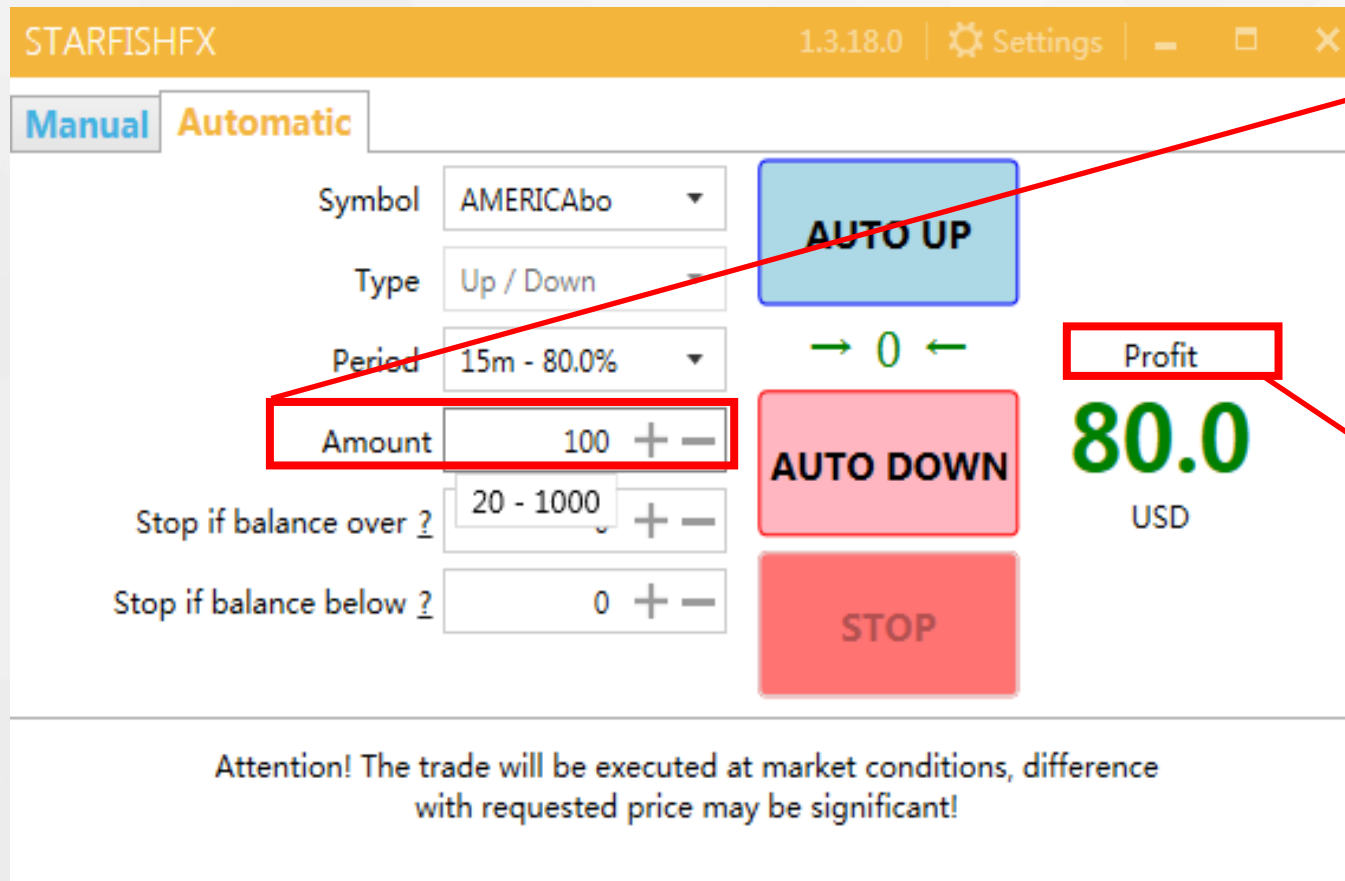
STOP

Profit 16.0 USD

Attention! The trade will be executed at market conditions, difference with requested price may be significant!

Select your desired expiration timeframe

## 3. Input AMOUNT



STARFISHFX 1.3.18.0 | Settings

Manual Automatic

Symbol AMERICAb0

Type Up / Down

Period 15m - 80.0%

Amount 100 + -

Stop if balance over ? 20 - 1000 + -

Stop if balance below ? 0 + -

AUTO UP

AUTO DOWN

STOP

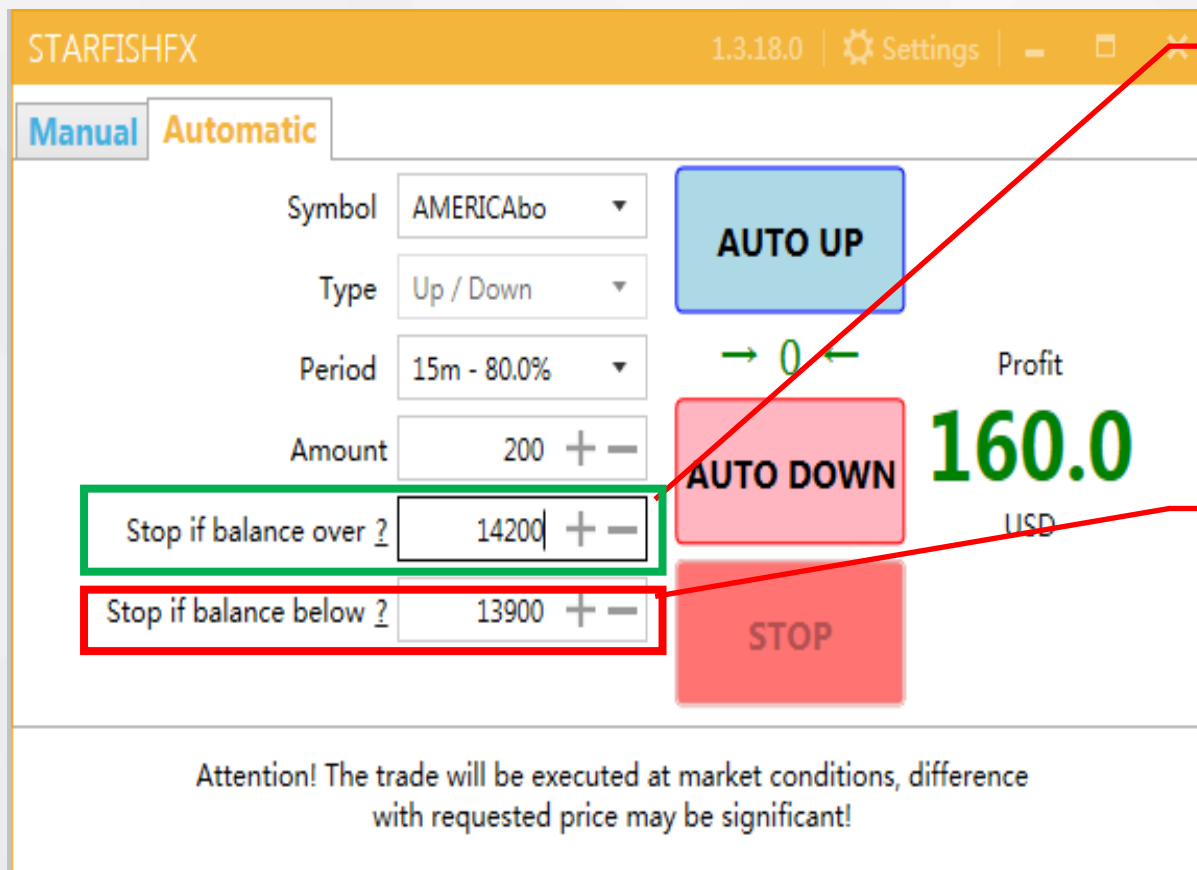
Profit 80.0 USD

Attention! The trade will be executed at market conditions, difference with requested price may be significant!

Input the amount to invest per trade.

The pre determined profit per trade is displayed here

## 4. Input CONDITIONS



STARFISHFX 1.3.18.0 Settings

Manual Automatic

Symbol AMERICAbo

Type Up / Down

Period 15m - 80.0%

Amount 200 + -

Stop if balance over ? 14200 + -

Stop if balance below ? 13900 + -

AUTO UP

AUTO DOWN

STOP

Profit 160.0 USD

Attention! The trade will be executed at market conditions, difference with requested price may be significant!

### Take Profit Level

In this case, automatic trading will stop once your account balance is **more than** 14200. Note : Your account balance will also be affected by manual trades.

### Stop Loss Level

In this case, automatic trading will stop once your account balance is **less than** 13900. Note : Your account balance will also be affected by manual trades.

## 4. Input CONDITIONS

STARFISHFx 1.3.18.0 Settings

**Manual** Automatic

Symbol: AMERICAb0  
Type: Up / Down  
Period: 15m - 80.0%  
Amount: 100 + -

→ 0 ← Profit: 80.0 USD

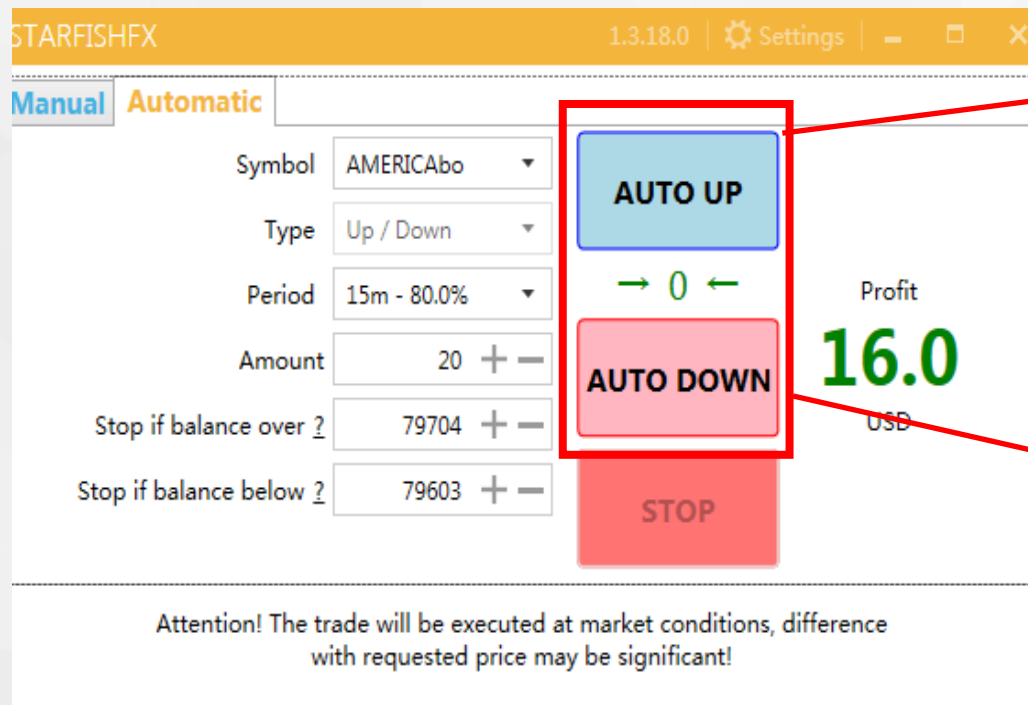
Stop if balance over ? 0 + -  
Stop if balance below ? 0 + -

AUTO UP  
AUTO DOWN  
STOP

Attention! The trade will be executed at market conditions, difference with requested price may be significant!

If the values are unchanged at the default value "zero", the Auto trading will continue to trade indefinitely until it is manually stopped.

## 5. Choose DIRECTION Starting the Auto Roller



STARFISHFX 1.3.18.0 | Settings

Manual Automatic

Symbol AMERICAb0

Type Up / Down

Period 15m - 80.0%

Amount 20 + -

Stop if balance over ? 79704 + -

Stop if balance below ? 79603 + -

AUTO UP

→ 0 ←

AUTO DOWN

STOP

Profit 16.0 USD

Attention! The trade will be executed at market conditions, difference with requested price may be significant!

If you think there will be an **UP** trend, click Auto Up to automatically repeat the assigned **UP** Trade.

If you think there will be a **DOWN** trend, click Auto Down to automatically repeat the assigned **DOWN** Trade.

## Auto Trading in Progress

STARFISHFX 1.3.18.0 Settings

**Manual Automatic**

Symbol: AMERICAb0  
 Type: Up / Down  
 Period: 15m - 80.0%  
 Amount: 20  
 Stop if balance over: 79704  
 Stop if balance below: 79603

AUTO UP  
 → 0 ←  
 AUTO DOWN  
 STOP

Profit: **16.0** USD

**Auto-trading in progress**  
 Up 20 AMERICAb0 15m, 80.0% Auto: #460791056

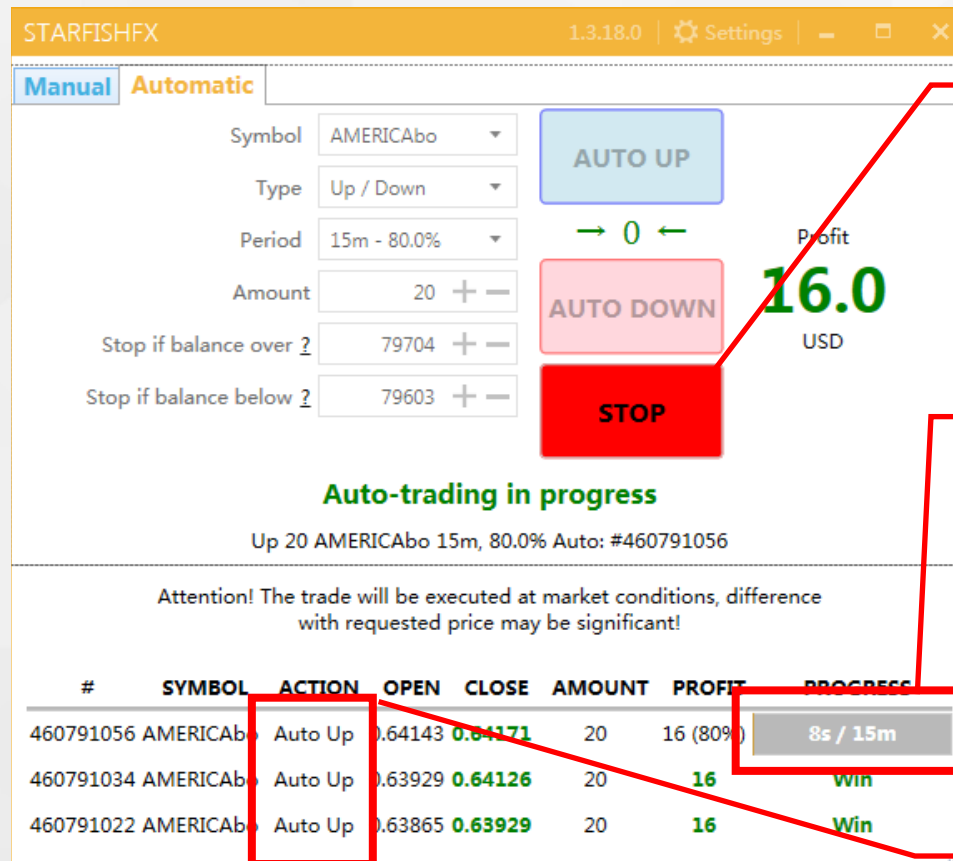
Attention! The trade will be executed at market conditions, difference with requested price may be significant!

#	SYMBOL	ACTION	OPEN	CLOSE	AMOUNT	PROFIT	PROGRESS
460791056	AMERICAb0	Auto Up	0.64143	<b>0.64171</b>	20	16 (80%)	8s / 15m
460791034	AMERICAb0	Auto Up	0.63929	<b>0.64126</b>	20	<b>16</b>	Win
460791022	AMERICAb0	Auto Up	0.63865	<b>0.63929</b>	20	<b>16</b>	Win

The message **“Auto-trading in progress”** and trade details indicate that Auto Roller is currently activated.

Trade in progress is displayed with the count down timer.

## Stopping Auto Trading



STARFISHFX 1.3.18.0 Settings

Manual Automatic

Symbol AMERICAb

Type Up / Down

Period 15m - 80.0%

Amount 20

Stop if balance over 79704

Stop if balance below 79603

AUTO UP

AUTO DOWN

STOP

Profit 16.0 USD

Auto-trading in progress

Up 20 AMERICAb 15m, 80.0% Auto: #460791056

Attention! The trade will be executed at market conditions, difference with requested price may be significant!

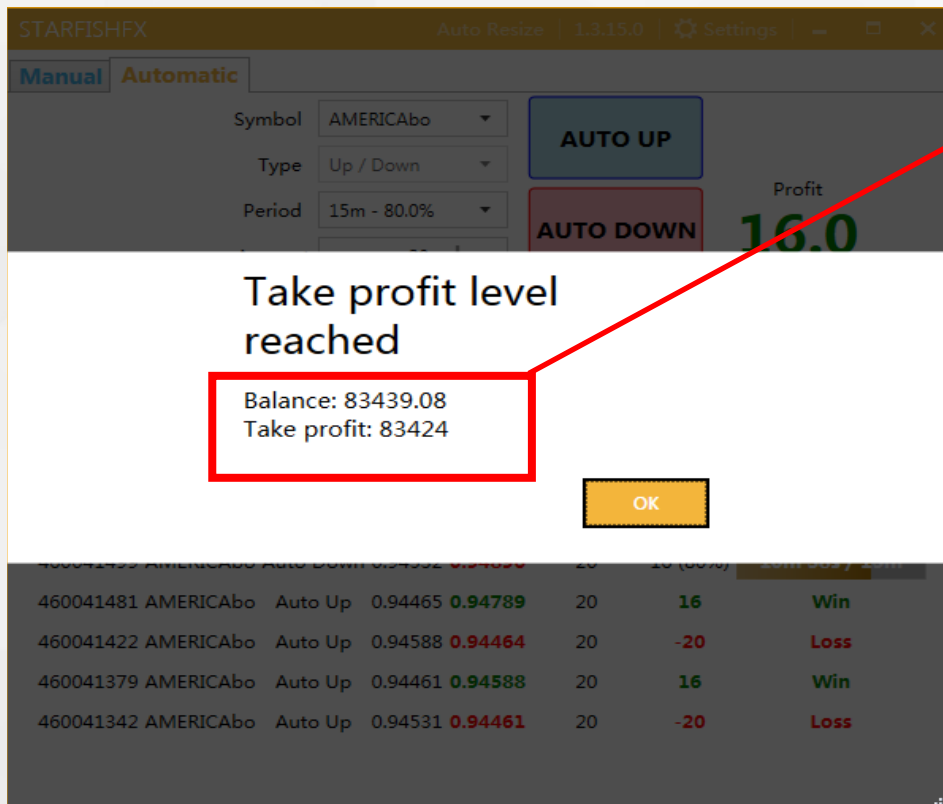
#	SYMBOL	ACTION	OPEN	CLOSE	AMOUNT	PROFIT	PROGRESS
460791056	AMERICAb	Auto Up	0.64143	0.64171	20	16 (80%)	8s / 15m
460791034	AMERICAb	Auto Up	0.63929	0.64126	20	16	Win
460791022	AMERICAb	Auto Up	0.63865	0.63929	20	16	Win

Click on this **“STOP”** button at any time to stop the Auto Roller system. This means that no more new trades will be placed.

Clicking on the **“STOP”** button **WILL NOT CANCEL** a trade that is **“in-progress”**.

Note : Under Trade history, Auto Roller Trades are identified with an **“Auto”**.

## Loss Protection



STARFISHFX Auto Resize 1.3.15.0 Settings

Manual Automatic

Symbol AMERICAb0

Type Up / Down

Period 15m - 80.0%

AUTO UP

AUTO DOWN

Profit 16.0

Take profit level reached

Balance: 83439.08  
Take profit: 83424

OK

460041481	AMERICAb0	Auto Up	0.94465	0.94789	20	16	Win
460041422	AMERICAb0	Auto Up	0.94588	0.94464	20	-20	Loss
460041379	AMERICAb0	Auto Up	0.94461	0.94588	20	16	Win
460041342	AMERICAb0	Auto Up	0.94531	0.94461	20	-20	Loss

### Stop Loss

If the account balance falls **below the set Stop Loss level**, the Auto Roller will cease to perform new trades.

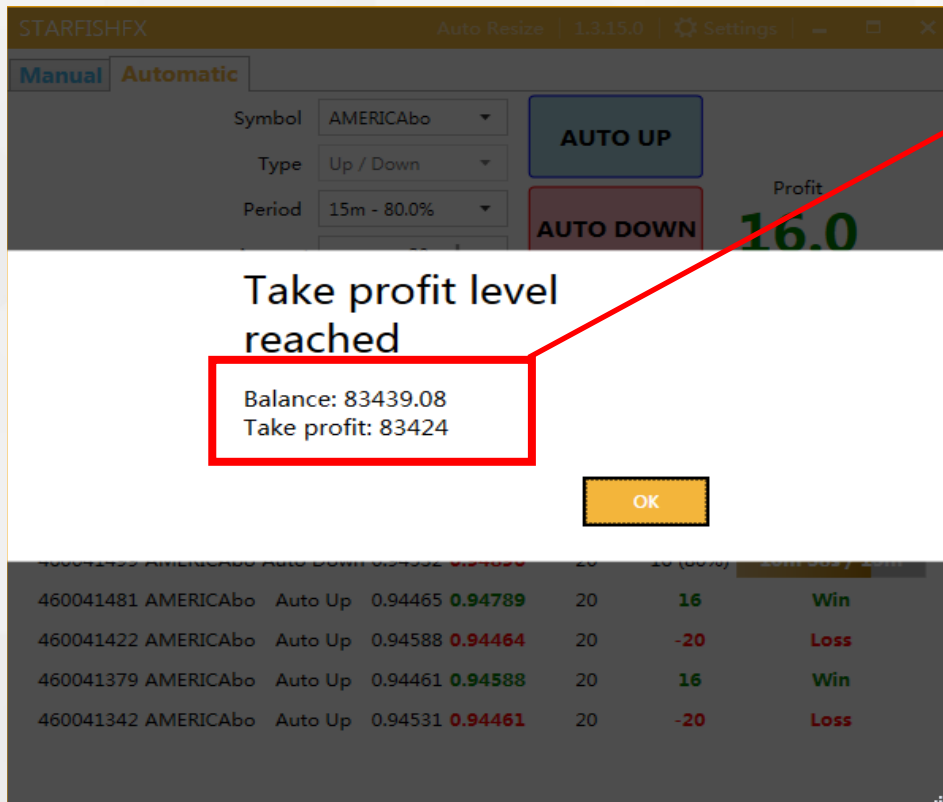
A message will be displayed to alert the trader that the auto trading has stopped.

### Note :

Your account balance will also Be affected by manual trades.



## Taking Profit



STARFISHFX Auto Resize 1.3.15.0 Settings

Manual Automatic

Symbol AMERICAb0

Type Up / Down

Period 15m - 80.0%

AUTO UP

AUTO DOWN

Profit 16.0

Take profit level reached

Balance: 83439.08  
Take profit: 83424

OK

460041481	AMERICAb0	Auto Up	0.94465	0.94789	20	16	Win
460041422	AMERICAb0	Auto Up	0.94588	0.94464	20	-20	Loss
460041379	AMERICAb0	Auto Up	0.94461	0.94588	20	16	Win
460041342	AMERICAb0	Auto Up	0.94531	0.94461	20	-20	Loss

### Take Profit

If the account balance goes **above the set Take Profit level**, the Auto Roller will cease to perform new trades.

A message will be displayed to alert the trader that the auto trading has stopped.

### Note :

Your account balance will also be affected by manual trades.

# THANK YOU

Experience what it truly means to be  
**ON A ROLL**



Website : [www.starfishfx.com](http://www.starfishfx.com)

Email : [cs@starfishfx.com](mailto:cs@starfishfx.com)